

Certificate of Analysis

Product: Eucalyptus globulus 80 organic

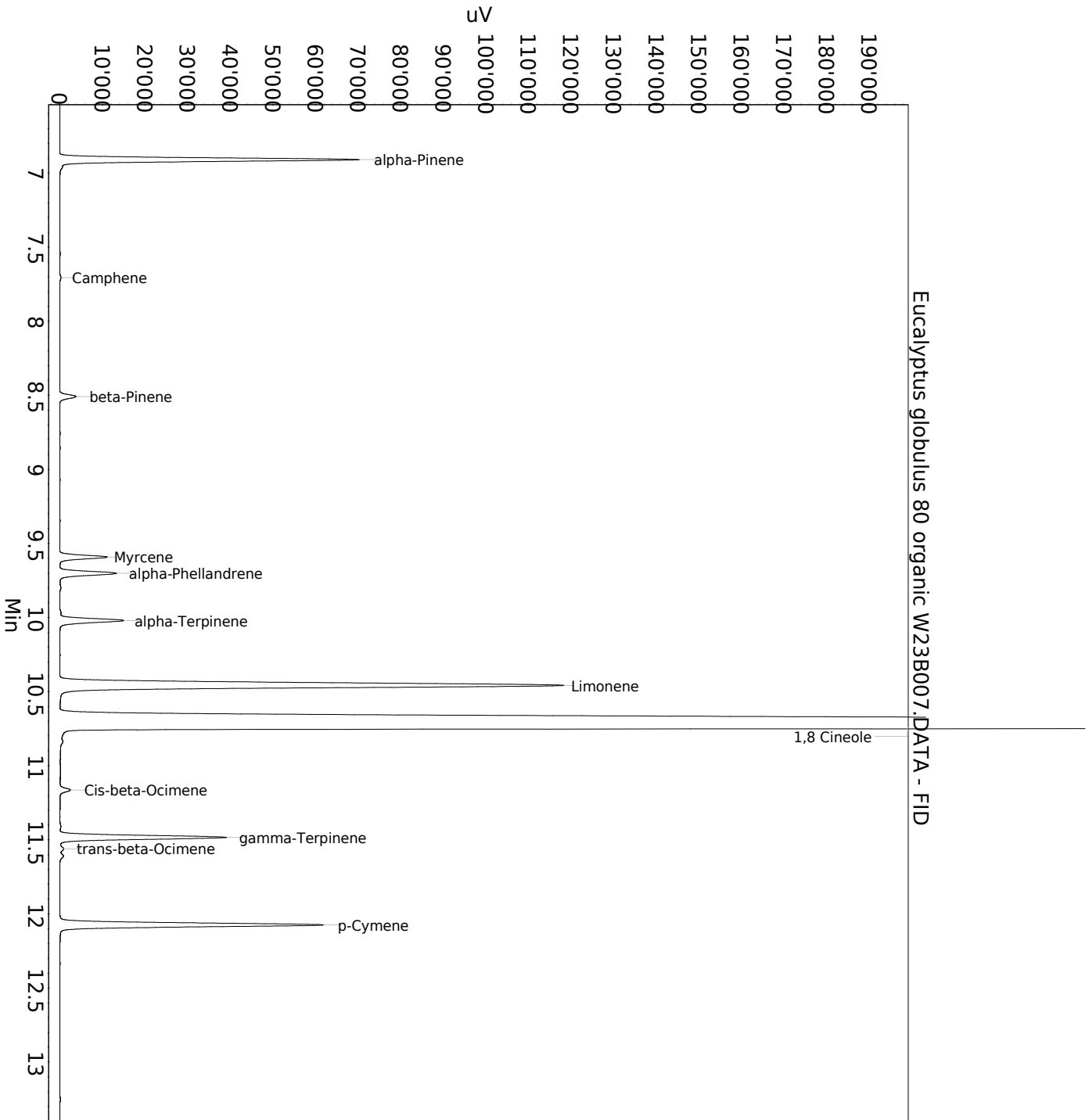
Lot: W23B007

Date of analysis: 06.05.2022 08:34:23

System: GC-430 FID

Column: BGB Wax 60m / 0.25mm / 0.25um

Method: 120102 essential basis 60



This data sheet was issued to the best of our knowledge and is supplied without warranty for its correctness or accuracy.

Certificate of Analysis

Product: Eucalyptus globulus 80 organic

Lot: W23B007

Date of analysis: 06.05.2022 08:34:23

System: GC-430 FID

Column: BGB Wax 60m / 0.25mm / 0.25um

Method: 120102 essential basis 60

Index	Name	Time [Min]	Area [uV.Min]	Area % [%]	Allergene
1	alpha-Pinene	6.91	1946.6	3.275	
2	Camphene	7.71	8.6	0.014	
3	beta-Pinene	8.51	116.9	0.197	
4	Myrcene	9.59	326.1	0.549	
5	alpha-Phellandrene	9.70	410.0	0.690	
6		9.80	8.9	0.015	
7	alpha-Terpinene	10.02	475.8	0.800	
8	Limonene	10.46	4584.1	7.712	Reg (EC) 1223/2009
9	1,8 Cineole	10.74	48372.8	81.385	
10		10.84	26.1	0.044	
11	Cis-beta-Ocimene	11.16	69.1	0.116	
12	gamma-Terpinene	11.48	1166.2	1.962	
13	trans-beta-Ocimene	11.56	26.5	0.045	
14		11.61	25.5	0.043	
15	p-Cymene	12.07	1873.7	3.152	
Total			59436.9	100.000	

This data sheet was issued to the best of our knowledge and is supplied without warranty for its correctness or accuracy.